

## Access to High Speed Ethernet Category 6A<sup>+</sup> Cabling Solutions

### Premium Line CATEGORY 6A<sup>+</sup> CABLING SOLUTIONS

#### **10G Standard**

2006, standard IEEE 802.3an is ratified to provide 10 Gbit/s connections over unshielded or shielded twisted pair cables, and specified transmission characteristics up to 500MHz.

This requires Category 6A or better balanced twisted pair cables comply with ISO 11801 amendment 2 or ANSI/TIA-568-C.2 to support 10GBASE-T up to distances of 100 m.

So far, 10G BASE-T Ethernet is the fastest LAN connection path over copper communication solutions.

#### **10G Bandwidth**

10GBASE-T system requires the cable works as full duplex mode, which means use 4 pairs for simultaneous transmission in both directions, and to support 100m data transmission, it must use Category 6A 500MHz at a minimum.

Premium Line Category 6A<sup>+</sup> 1000MHz communication cable, with the significant higher bandwidth to provide bigger quantity of "data path" , definitely guarantees you stable and excellent practical 10G network and capable to support higher speed application.

For the future building data network upgrade, Premium Line 1000MHz cable is special design to assure the bandwidth to be compatible with the faster and faster network change and develop. And it will be also make the system upgrade project easy and comfortable as only need to change the module of both side for the permanent links.

#### **"MADE IN GERMANY" Solution**

As Europe now is leading edge of 10 G shielded solutions, Premium Line Systems GmbH combine strength of own experienced R&D team and special know-how market wise to provide a **MADE IN GERMANY** Category 6A<sup>+</sup> shielded solution. High quality assurance as always the German quality products perform!

#### **Installation Cable**

Category 6A<sup>+</sup> S/FTP 1000MHz

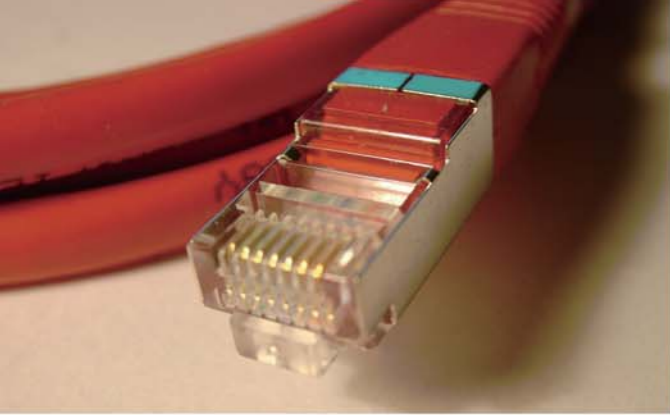
#### **Patch Cord**

Category 6A<sup>+</sup> S/FTP Patch Cord

#### **Keystone Jack**

Category 6A<sup>+</sup> Shielded Die-casting Keystone Jack

#### **Modular German Outlet**



# CATEGORY 6A+ CABLING SOLUTIONS

*premium  
line*

www.premiumline-cabling.com



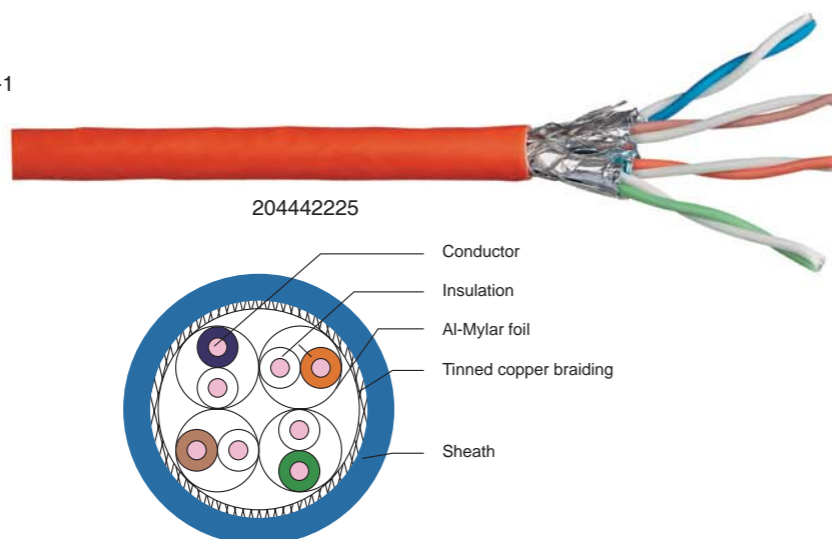
## Installation Cable Category 6A+ S/FTP 1000MHz

### Standards:

- ISO/IEC 2nd Edition Admendent1.2
- CENELEC EN 50288-10-1, EN 50288-4-1
- ISO/IEC 61156-5 2nd Edition
- ISO/IEC 61156-6
- ANSI/TIA-568-C.2
- ROHs compliant

### Application:

- 10G BASE-T Ethernet
- 1000BASE-TX (Gigabit Ethernet)
- 1000BASE-T (Gigabit Ethernet)
- 100BASE-TX Fast Ethernet
- 10BASE-T Ethernet
- Voice



### Construction

Conductor	Material / size	Bare Copper / 23 AWG
Insulation	Material	Foam-Skin PE
Inner-Shield	Aluminum-Mylar	An Aluminum Foil Screen Around Each Pair
Braid	Material	Tinned Copper
	Coverage	Nom. 48%
Sheath	Material	LSOH
	Diameter	7.4± 0.3 mm

### Mechanical & Environmental Characteristics

Bending Radius	≥ 4D, without load ≥ 8D, with load
Operation Temperature	0°C~+50°C
Installation Temperature	-10°C~+50°C
Storage Temperature	-20°C~+50°C

### Electrical Performance

Freq (MHz)	Attenuation (dB)		NEXT (dB/100m)		PS NEXT (dB)		ACR (dB)		PSACR (dB)		ACR-F (dB)		PSACR-F (dB)		Return Loss (dB)		Propagation Delay (ns)	
	Nor.	Typ.	Nor.	Typ.	Nor.	Typ.	Nor.	Typ.	Nor.	Typ.	Nor.	Typ.	Nor.	Typ.	Nor.	Typ.	Nor.	Typ.
4.0	3.7	3.4	78.0	100.0	75.0	97.0	74.3	96.6	71.3	93.6	78.0	90.0	75.0	87.0	23.0	33.0	494.0	474.0
16.0	7.3	6.4	78.0	100.0	75.0	97.0	70.7	93.6	67.7	90.6	69.9	90.0	66.9	87.0	25.0	35.0	485.0	465.0
31.25	10.3	9.0	78.0	100.0	75.0	97.0	67.7	91.0	64.7	88.0	64.1	90.0	61.1	87.0	23.6	33.6	482.0	462.0
62.5	14.6	13.0	75.5	100.0	72.5	97.0	60.9	87.0	57.9	84.0	58.1	85.0	55.1	82.0	21.5	31.5	481.0	461.0
100.0	18.5	16.8	72.4	98.0	69.4	95.0	53.9	81.2	50.9	78.2	54.0	81.0	51.0	78.0	20.1	30.1	480.0	460.0
200.0	26.5	23.9	67.9	93.0	64.9	90.0	41.4	69.1	38.4	66.1	48.0	77.0	45.0	74.0	18.0	28.0	479.0	459.0
250.0	29.7	28.5	66.4	92.1	63.4	89.1	36.7	63.6	33.7	60.6	46.0	76.0	43.0	73.0	17.3	27.3	478.0	458.0
350.0	35.4	31.8	64.2	90.3	61.2	87.3	28.8	58.5	25.8	55.5	43.1	69.0	40.1	66.0	17.3	27.3	478.0	458.0
400.0	38.0	33.4	63.4	89.1	60.4	86.1	25.4	55.7	22.4	52.7	42.0	68.1	39.0	65.1	17.3	27.3	478.0	458.0
550.0	45.0	37.2	61.3	87.3	58.3	84.3	16.3	50.1	13.3	47.1	39.2	66.2	36.2	63.1	17.3	27.3	478.0	458.0
600.0	47.1	42.5	60.7	86.1	57.7	83.1	13.6	43.6	10.6	40.6	38.4	60.0	35.4	62.0	17.3	27.3	477.0	458.0
800.0	54.9	48.2	58.9	83.1	55.9	80.1	3.9	34.9	0.9	31.9	35.9	52.1	32.9	49.1	16.1	27.3	477.0	457.0
1000.0	61.9	57.5	57.4	81.0	54.4	78.0	-4.5	23.5	-7.5	20.5	34.0	46.0	31.0	43.0	15.1	24.0	477.0	456.0

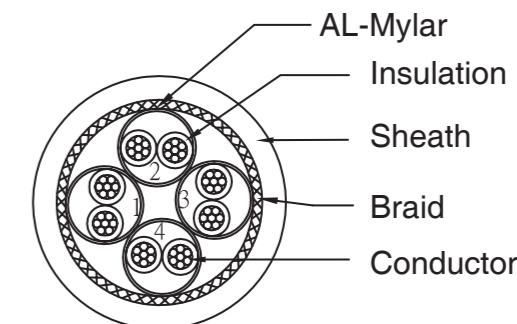
### Category 6A+ S/FTP 1000MHz Installation Cable

PART NO.	DESCRIPTION	PACKING SIZE
204442225	Premium Line Category 6A+ S/FTP Installation Cable, 500m reel, LSOH, 1000 MHz	45(O.D)×29.8(H) cm

## Patch Cord

### Category 6A+ S/FTP Patch Cord

Premium Line Category 6A+ S/FTP patch cord supports the whole Category 6A channel transmission as per standard ANSI/TIA-568-C.2, ISO/IEC 11801 and EN 50173-1 Class EA specifications. And the product is finished with LSOH outer sheath.



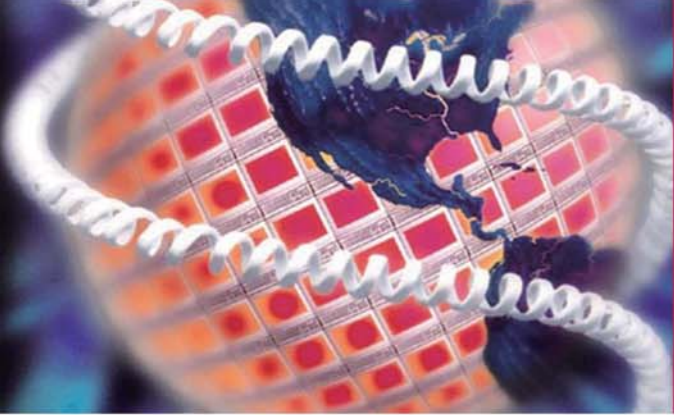
### Construction

Conductor	Material / size	Bare Copper / 26 AWG
Insulation	Material	Foam-Skin PE
Inner-Shield	Aluminum-Mylar	An aluminum foil Screen Around Each Pair
Braid	Material	Tinned Copper
	Coverage	Nom. 48%
Sheath	Material	LSOH
	Diameter	5.7± 0.3 mm

### Category 6A+ S/FTP Patch Cord

Length	Grey	Green	Blue	Red	Yellow
0.5 m	188420055	188420056	188420054	188420053	188420058
1 m	188420105	188420106	188420104	188420103	188420108
2 m	188420205	188420206	188420204	188420203	188420208
3 m	188420305	188420306	188420304	188420303	188420308
5 m	188420505	188420506	188420504	188420503	188420508
7 m	188420705	188420706	188420704	188420703	188420708
10 m	188421005	188421006	188421004	188421003	188421008

CATEGORY 6A+ CABLING SOLUTIONS



# CATEGORY 6A+ CABLING SOLUTIONS

**premium  
line**

www.premiumline-cabling.com



## Keystone Jack

### Category 6A+ Shielded Die-casting Keystone Jack

Premium Line 90 ° shielded Die-casting Keystone Jack in special design for optimal EMI protection. Toolless design no need additional tools for termination, supports T568 A&B wiring. The finish product complies with EU ROHS directive.

- Design and assemble in Germany, Completely A "Made in Germany" module
- Real ISO/IEC 11801 compliant module
- All condition excellent performance to support your LAN access
- Easy and quickly installation, reliable contact & connectivity
- Standard Rj45 socket with springs for loop grounding noise transferring
- Nickel plated over zinc alloy fully shield housing, reliable mechanical structure
- Finish product in compact design, standard size fits with worldwide style outlets
- Be compatible with Premium Line distinct modular patch panel for datacenter or cross connect use

#### Physical Characteristics

Jack	Phosphor bronze, 50µ inch gold plating over nickel in contact area
IDC	100µ inch nickel plated over phosphor bronze
Shielded Cover	50-60µ inch nickel plated over phosphor bronze

#### Electrical Characteristics

Dielectric Strength	1000V RMS for 1min
Current Rating	1.5Amp Max.
Insulation Resistance	10MΩ Min.
Contact Resistance	2mΩ per contact
Temperature Range	-10°C to 60°C
Humidity	10%-90%; non condensing

#### Applications

- 10GBASE-T Ethernet
- 1000BASE-TX Gigabit Ethernet
- 1000BASE-T Gigabit Ethernet
- 100BASE-TX Fast Ethernet.
- 10BASE-T Ethernet.
- Voice, Video and other applications.



108514010

## Modular German Outlet

Premium Line shutter type modular outlet is in standard German style, finished in 80x80 size. Available to provide RAL9010 and RAL1013 color for option. And also the compatible back box with same color is on your request.



123212090



112003080

#### Modular German Outlet

PART NO.	DESCRIPTION	PACKING SIZE
123212090	2-Port 45° Modular Outlet for Keystone with Shutter, 80x80 mm, RAL 9010	47.5x38.5x26 cm
123212080	2-Port 45° Modular Outlet for Keystone with Shutter, 80x80 mm, RAL 1013	47.5x38.5x26 cm
112003090	Wall Mounted Back Box 80x80x45 mm, Color RAL 9010	43x31x29 cm
112003080	Wall Mounted Back Box 80x80x45 mm, Color RAL 1013	43x31x29 cm

All the products are verified the electrical characteristics required in the directive.

#### Category 6A+ Shielded Die-casting Keystone Jack

PART NO.	DESCRIPTION	PACKING SIZE
108514010	Premium Line Category 6A+ 90° Shielded Die-casting Keystone Jack	53.8x35.2x 27cm